



**QUALITY MODERN VILLAS ON  
SPAIN'S MOST FAMOUS COAST!**  
DESIGNED AND BUILT TO THE HIGHEST STANDARDS





## COSTA DEL SOL



**AN IDEAL LOCATION FOR YOUR PERFECT PROPERTY!**



---

QUALITY MODERN VILLAS  
**DOMUS DESIGNS  
PROJECTS**

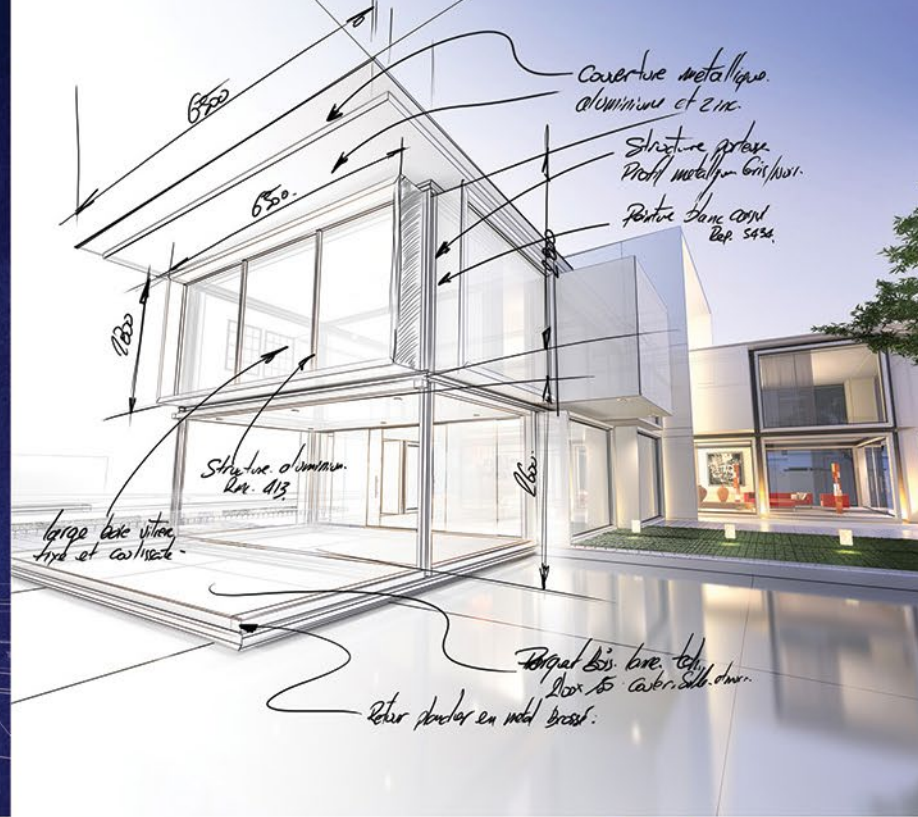
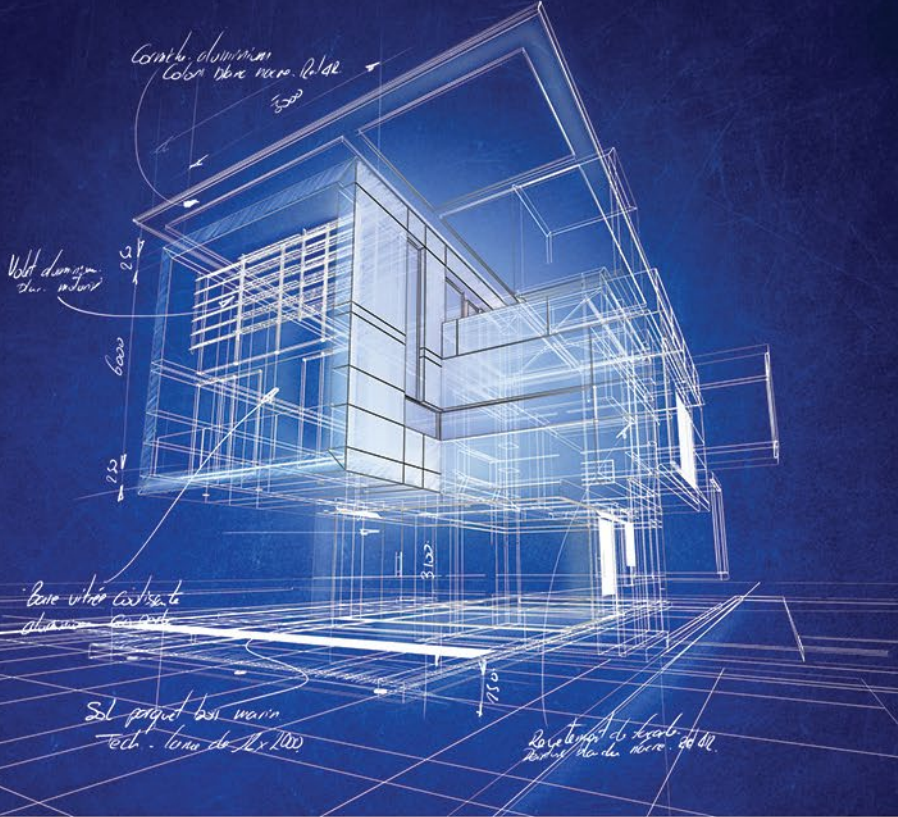
- ✓ **Highest European standards and qualities**
- ✓ **Faster than conventional building methods**
- ✓ **Experienced professionals with successful track record**





## QUALITY MODERN VILLAS THE BENEFITS OF DOMUS DESIGNS

- ✓ Open and spacious living spaces due to unique construction system without pillars
- ✓ Bespoke designs allowing maximum input from the purchaser
- ✓ Flexible and Secure Payment Plans giving peace of mind
- ✓ Additional “green” enhancements available: solar, water recycling, heat pumps and more
- ✓ Completed within 10 months from issue of building license



**Consumer Trends, Home Design and  
Construction Evolution**

**Stunning Contemporary Villas**  
Presented by Domus Invest





THE DOMUS DESIGNS TEAM

## PROVEN PROFESSIONALS WITH 30 YEARS EXPERIENCE IN SPAIN



---

### **Presented by Domus Invest**

Your preferred property consultant sourcing tailor made investment opportunities



---

**Full Project Management and architectural service provided,**  
including initial survey, design concept and project management



---

### **Latest Building Technology**

Our recommended building system: efficient and eco-friendly



---

### **Comprehensive Legal Assistance on all Property Related Issues**

Over 60 legal professionals in 5 Spanish offices



With extensive experience in all aspects of the property market the Domus Team can ensure you achieve your goals on time and under budget. Led by respected industry leaders and tenured experts, Domus has exclusive partnerships that bring you prime opportunities on the Costa del Sol. Our services cover all aspects of the building process from the initial location selection, complete architectural designs, construction quotes, building licenses, Spanish legal and tax requirements to handing over your completed and furnished home ready for your hassle-free enjoyment.



---

**Expert in sourcing and  
developing investment  
opportunities**



---

**Exclusive and direct access to  
property and building plots**



---

**More than 1 million m<sup>2</sup> of  
construction completed**



---

**Network of superb service  
providers for succesful  
product delivery**



# SISMO<sup>®</sup>

BUILDING TECHNOLOGY  
SPAIN



SISMO, the innovative building system: efficient, eco-friendly, adaptable to your chosen design.



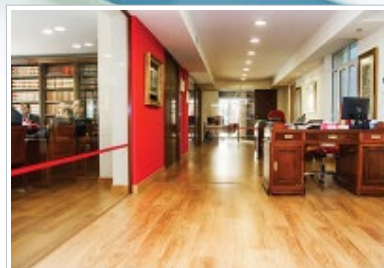
- ✔ INNOVATIVE BUILDING SYSTEM
- ✔ 20 YEARS IN DEVELOPMENT
- ✔ BELGIAN ORIGIN
- ✔ WORLDWIDE USE IN 88 COUNTRIES
- ✔ MODERN TECHNOLOGY
- ✔ ANTI-SEISMIC

## ADVANTAGES

- ✔ Industrialised Construction System
- ✔ Universal
- ✔ Cost Efficient
- ✔ Fast Construction
- ✔ Light Weight
- ✔ Efficient Insulation
- ✔ Certified Quality
- ✔ Durable
- ✔ Environment-friendly
- ✔ Suitable for SISMO Zones
- ✔ Hurricane Proof
- ✔ Fire Resistant
- ✔ Versatile, Efficient and Adoptable



GVA & ATENCIA offers the capacity of a major law firm with the attention and flexibility of a small one. Over 60 legal professionals work in 5 Spanish offices. All of them share the same traits: commitment, independence, work capacity, precision and a focus on excellence.



- ✓ Constitutional
- ✓ Leasing
- ✓ Banking
- ✓ Insolvency
- ✓ Consumers
- ✓ Contracts
- ✓ Loss and Damage

- ✓ European Union Law
- ✓ Family and Inheritance
- ✓ Employment
- ✓ Litigation
- ✓ Company and Commercial
- ✓ Criminal
- ✓ Public

- ✓ Insurance
- ✓ IT
- ✓ Tax
- ✓ Planning
- ✓ Purchase
- ✓ Planning
- ✓ Fiscal and Tax

- ✓ Contracts
- ✓ Construction
- ✓ Investment
- ✓ Financing
- ✓ Leasing



---

***Contemporary Villas in great locations along the Costa del Sol***

Select from a variety of stylish, modern designs that can be  
customized to your own specifications

---







## DESIGN OPTION 1 - PLOT ON REQUEST\*

**Build Size:** approx. 301m<sup>2</sup>

**Price from:** €958,984\*\*

**Bedrooms:** 3

**Bathrooms:** 3.5

**PRICE INCLUDES:** PLOT CONSTRUCTED VILLA WITH PRIVATE POOL FITTED KITCHEN AND BATHROOM ALL LICENSES AND PROFESSIONAL FEES

\* €277,778 allocated for plot.

\*\* Images used are for illustration purposes only; final price is subject to distribution, layout, choice of materials and plot selected.



## DESIGN OPTION 2 - PLOT ON REQUEST\*

**Build Size:** approx. 275m<sup>2</sup>

**Price from:** €927,966\*\*

**Bedrooms:** 4

**Bathrooms:** 3.5

**PRICE INCLUDES:** PLOT CONSTRUCTED VILLA WITH PRIVATE POOL FITTED KITCHEN AND BATHROOM ALL LICENSES AND PROFESSIONAL FEES

\* €277,778 allocated for plot.

\*\* Images used are for illustration purposes only; final price is subject to distribution, layout, choice of materials and plot selected.



## DESIGN OPTION 3 - PLOT BENALMÁDENA

**Build Size:** approx. 241m<sup>2</sup>

**Price from:** €826,323\*

**Bedrooms:** 3

**Bathrooms:** 2.5

**PRICE INCLUDES:** PLOT CONSTRUCTED VILLA WITH PRIVATE POOL FITTED KITCHEN AND BATHROOM ALL LICENSES AND PROFESSIONAL FEES

\* Images used are for illustration purposes only; final price is subject to distribution, layout, choice of materials and plot selected.





## DESIGN OPTION 4 - PLOT BENALMÁDENA

**Build Size:** approx. 221m<sup>2</sup>

**Price from:** €838,556\*

**Bedrooms:** 3

**Bathrooms:** 2.5

**PRICE INCLUDES:** PLOT CONSTRUCTED VILLA WITH PRIVATE POOL FITTED KITCHEN AND BATHROOM ALL LICENSES AND PROFESSIONAL FEES

\* Images used are for illustration purposes only; final price is subject to distribution, layout, choice of materials and plot selected.



## DESIGN OPTION 5 - PLOT ON REQUEST\*

**Build Size:** approx. 270m<sup>2</sup>

**Price from:** €931,219\*\*

**Bedrooms:** 4

**Bathrooms:** 2.5

**PRICE INCLUDES:** PLOT CONSTRUCTED VILLA WITH PRIVATE POOL FITTED KITCHEN AND BATHROOM ALL LICENSES AND PROFESSIONAL FEES

\* €277,778 allocated for plot.

\*\* Images used are for illustration purposes only; final price is subject to distribution, layout, choice of materials and plot selected.



## DESIGN OPTION 6 - PLOT MIJAS LAS LOMAS

**Build Size:** approx. 276m<sup>2</sup>

**Price from:** €784,303\*

**Bedrooms:** 3

**Bathrooms:** 2.5

**PRICE INCLUDES:** PLOT CONSTRUCTED VILLA WITH PRIVATE POOL FITTED KITCHEN AND BATHROOM ALL LICENSES AND PROFESSIONAL FEES

\* Images used are for illustration purposes only; final price is subject to distribution, layout, choice of materials and plot selected.





---

***Our Exclusive Rancho Santa Monica Villa Range***  
Contemporary Designs for outdoor living

---



## RSM PLOT 10

**Build Size:** approx. 275m<sup>2</sup>

**Price from:** €998,875\*

**Bedrooms:** 4

**Bathrooms:** 3.5

**PRICE INCLUDES:** PLOT CONSTRUCTED VILLA WITH PRIVATE POOL FITTED KITCHEN AND BATHROOM ALL LICENSES AND PROFESSIONAL FEES

\* Images used are for illustration purposes only; final price is subject to distribution, layout, choice of materials and plot selected.





## RSM PLOT 12

**Build Size:** approx. 301m<sup>2</sup>

**Price from:** €1,051,109\*

**Bedrooms:** 3

**Bathrooms:** 3.5

**PRICE INCLUDES:** PLOT CONSTRUCTED VILLA WITH PRIVATE POOL FITTED KITCHEN AND BATHROOM ALL LICENSES AND PROFESSIONAL FEES

\* Images used are for illustration purposes only; final price is subject to distribution, layout, choice of materials and plot selected.





## RSM PLOT 11

**Build Size:** approx. 323m<sup>2</sup>

**Price from:** €1,086,843\*

**Bedrooms:** 4

**Bathrooms:** 4.5

**PRICE INCLUDES:** PLOT CONSTRUCTED VILLA WITH PRIVATE POOL FITTED KITCHEN AND BATHROOM ALL LICENSES AND PROFESSIONAL FEES

\* Images used are for illustration purposes only; final price is subject to distribution, layout, choice of materials and plot selected.



## RSM PLOT 5

**Build Size:** approx. 311m<sup>2</sup>

**Price from:** €1,103,211\*

**Bedrooms:** 4

**Bathrooms:** 4.5

**PRICE INCLUDES:** PLOT CONSTRUCTED VILLA WITH PRIVATE POOL FITTED KITCHEN AND BATHROOM ALL LICENSES AND PROFESSIONAL FEES

\* Images used are for illustration purposes only; final price is subject to distribution, layout, choice of materials and plot selected.



## RSM PLOT 2 DELUXE

**Build Size:** approx. 375m<sup>2</sup>

**Price from:** €1,177,166\*

**Bedrooms:** 3

**Bathrooms:** 2.5

**PRICE INCLUDES:** PLOT CONSTRUCTED VILLA WITH PRIVATE POOL FITTED KITCHEN AND BATHROOM ALL LICENSES AND PROFESSIONAL FEES

\* Images used are for illustration purposes only; final price is subject to distribution, layout, choice of materials and plot selected.





## RSM PLOT 9

**Build Size:** approx. 295m<sup>2</sup>

**Price from:** €1,219,390\*

**Bedrooms:** 4

**Bathrooms:** 4.5

**PRICE INCLUDES:** PLOT CONSTRUCTED VILLA WITH PRIVATE POOL FITTED KITCHEN AND BATHROOM ALL LICENSES AND PROFESSIONAL FEES

\* Images used are for illustration purposes only; final price is subject to distribution, layout, choice of materials and plot selected.



## RSM PLOT 8

**Build Size:** approx. 310m<sup>2</sup>

**Price from:** €1,239,867\*

**Bedrooms:** 4

**Bathrooms:** 3.5

**PRICE INCLUDES:** PLOT CONSTRUCTED VILLA WITH PRIVATE POOL FITTED KITCHEN AND BATHROOM ALL LICENSES AND PROFESSIONAL FEES

\* Images used are for illustration purposes only; final price is subject to distribution, layout, choice of materials and plot selected.





## RSM PLOT 14

**Build Size:** approx. 302m<sup>2</sup>

**Price from:** €1,278,528\*

**Bedrooms:** 4

**Bathrooms:** 3.5

**PRICE INCLUDES:** PLOT CONSTRUCTED VILLA WITH PRIVATE POOL FITTED KITCHEN AND BATHROOM ALL LICENSES AND PROFESSIONAL FEES

\* Images used are for illustration purposes only; final price is subject to distribution, layout, choice of materials and plot selected.





---

***High Quality Materials and Finishings***

---

---

## **SPECIFICATIONS**

- ❖ ***Thermal Insulation***
  - ❖ ***Roca Tiles***
  - ❖ ***Fully Fitted Kitchen***
  - ❖ ***Security doors***
  - ❖ ***Double glazing***
  - ❖ ***GROHE bathroom appliances***
- 





---

***Your brand new, contemporary Domus Designs home is the perfect base from which to relish all that Southern Spain has to offer. Come, live, love and enjoy life under the sun.***

---







Centro Com. Andasol, Urb. Andasol - Ctra. N-340, km 189. 29604 MARBELLA  
Email: [info@domusdesigns.es](mailto:info@domusdesigns.es) | Phone: (+34) 952 831 220 | [www.domusdesigns.es](http://www.domusdesigns.es)